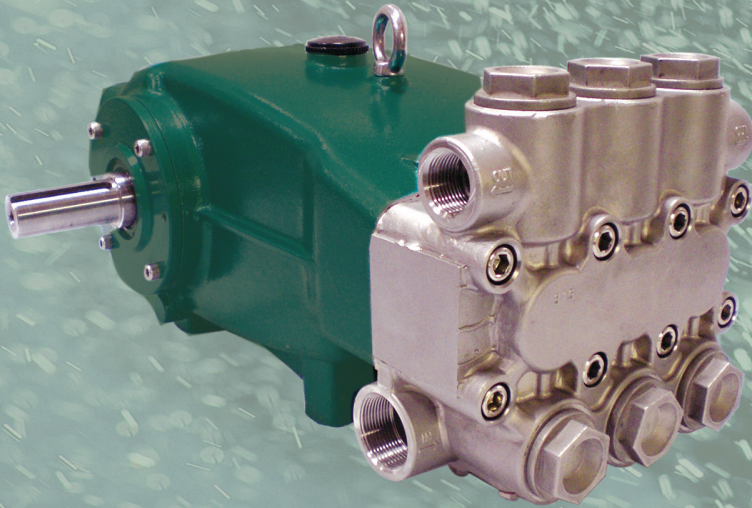


ARIMITSU

PROVEN PLUNGER PUMPS



30 Series

Model 3615

FEATURES

- Triplex pumps provide smooth liquid flow
- Special polymer seal system for greater temperature and chemical resistance in continuous operation
- Balanced flow crankcase design and precision machining ensures uniform lubrication and quiet operation
- One piece stainless steel manifold design improves fluid flow, decreases noise and service time
- Three oil drain ports for accessibility options

QUALITY

- Stainless steel valves with polished valve seats and hardened seating surfaces for efficient operation
- Precision ground ceramic plungers utilize a proprietary material blend for long life and increased thermal shock resistance
- Stainless steel manifold offers strength and corrosion resistance
- Chemically-resistant, polymer seals provide superior wear and durability versus traditional textile rubber seals
- Oversized crankshaft bearings for long life and quiet operation

MAINTENANCE

- No special tools required for repair or maintenance
- Fluid end is easily serviced without entering crankcase
- Easy access seal case and valve assemblies
- Seals require no adjustment or special tools

SPECIFICATIONS

Model 3615	US	METRIC
Flow	36 gpm	135 lpm
Pressure	1500 psi	105 bar
RPM	800	800
Inlet Pressure	0 to 70 psi	0 to 5 bar
Inlet	1-1/2"	1-1/2"
Outlet	1"	1"
Oil requirement	5.3 qts.	5 l
Shaft Dia.	1.378"	35 mm
Max Liquid Temp.	160°F	71°C
Shaft Location	Both sides	Both sides
Weight	125 lbs.	57 kg

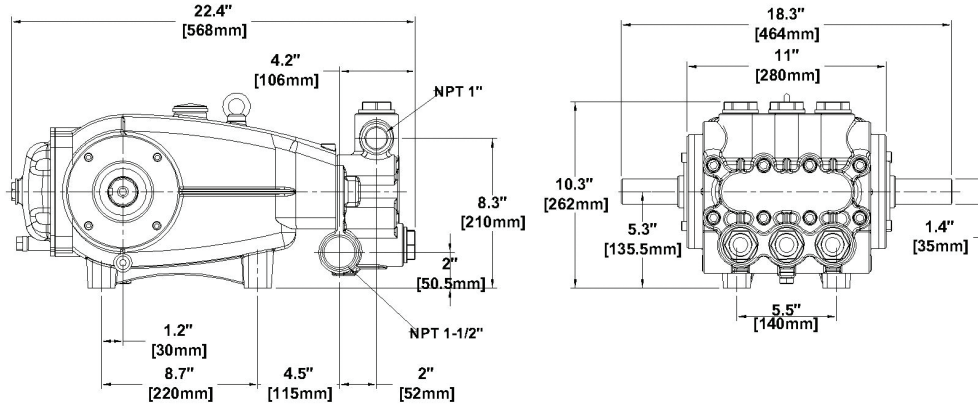
HORSEPOWER REQUIREMENTS

3615			Pressure (psi)				
RPM	GPM	LPM	800	900	1000	1200	1500
400	18.5	72.4	9.8	11.0	12.2	14.7	18.5
600	27.3	108.6	14.5	16.4	18.2	21.8	27.3
800	36.0	136.1	19.2	21.6	24.0	28.8	36.0

ARIMITSU

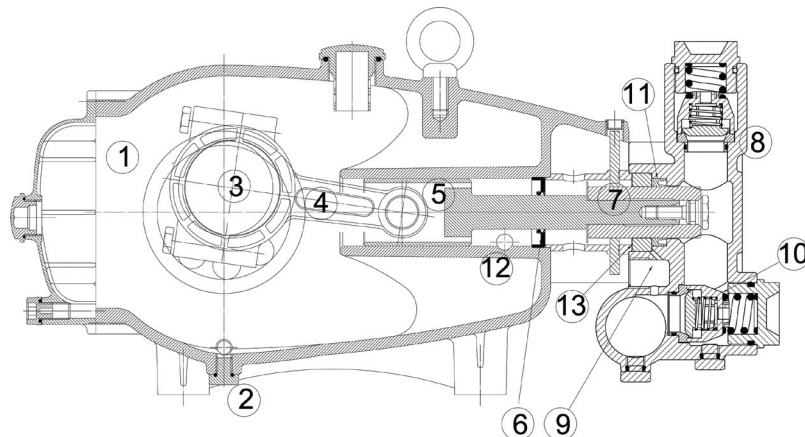
PROVEN PLUNGER PUMPS

DIMENSIONS (mm/in.)



CUTAWAY

- 1 High strength, lightweight aluminum crankcase
- 2 Three oil sump drain ports, one bottom and two side, provide access in a variety of installations and more complete draining of crankcase
- 3 Forged crankshaft is machined for low friction, quiet operation and high efficiency
- 4 High strength connecting rods are tolerance matched for extended life and low friction operation
- 5 High polish stainless steel plunger rods for smooth operation and even wear
- 6 Superior oil seal and support to eliminate oil leaks
- 7 Proprietary blend, solid ceramic plungers for long wear and increased thermal shock resistance
- 8 Stainless Steel manifold for strength and corrosion resistance, machined to optimize fluid flow and performance while extending useful life
- 9 Liquid-cooled, low drag seals provide long life, extended run-dry ability and increased suction lift
- 10 Stainless steel valve construction with PVDF cages, duplex stainless steel seats, and polished valve seating surfaces for efficient operation
- 11 Mechanically-loaded, polymer seals require no adjustment and self compensate for wear
- 12 Balanced flow crankcase ensures lubrication and quiet operation
- 13 Slide-in seal cases mean no special tools are required, making seal replacement easy



ARIMITSU

Arimitsu of North America, Inc.
 700 McKinley St. NW
 Anoka, MN 55303
 ph: 763.433.0303
 fax: 763.433.0404
 www.arimitsupumps.com



Rev.1, Model 3615, (5-10)
 Part #. 140